

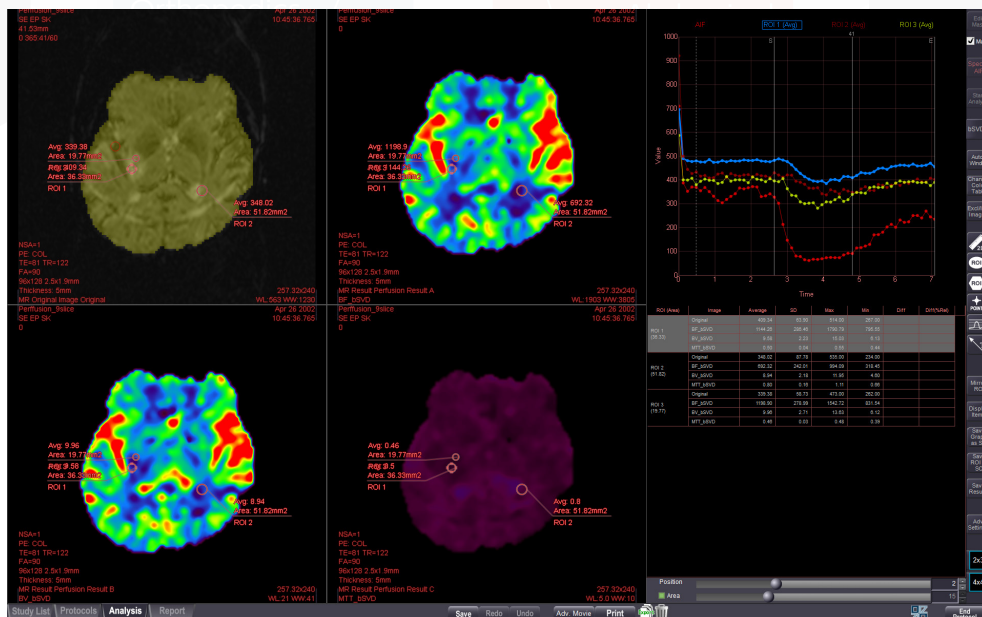
# MR Brain Perfusion Analysis

## Blood Flow Analysis Tools for Stroke and Tumor Assessment

Analyze up to forty multi-slice slabs for standard perfusion indices, using several algorithms to view three maps at a time. Standard and block-circulant deconvolution methods (with BF, BV, MTT maps) along with TTP are available for MR brain studies.

### Key features:

- Motion correction
- Calculations complete within seconds
- Automated mirroring of ROIs about the centerline of a structure
- Multiple algorithms available for use
- Selectable color tables for brain function mapping



### Japan Office

1-4-28 Mita, Minato-ku, Tokyo, 1080073, Japan  
Tel: +81 3 5427 1903 <http://www.zio.co.jp>

### US Office

1301 Shoreway Road, #325, Belmont, CA 94002-4105, USA  
Tel: +1 650 413 1300 <http://www.ziosoftinc.com>